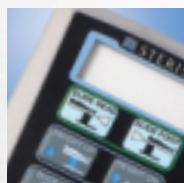


A Smart Investment in Surgical Versatility

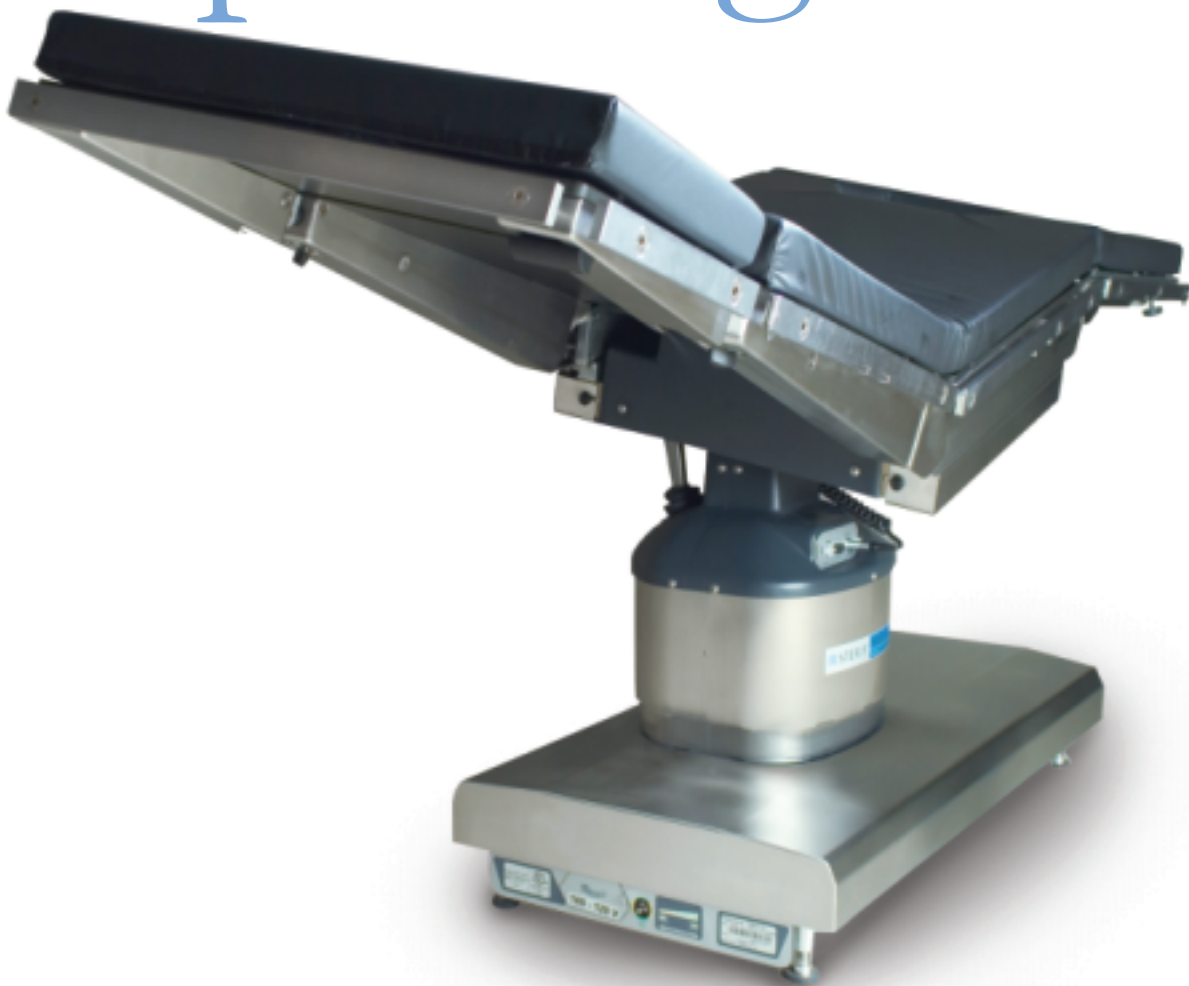
STERIS® 4085 GENERAL SURGICAL TABLE



ADVANCING CARE THROUGH PRACTICAL INNOVATION

 **STERIS**

The most versatile solution for today's multipurpose operating suites.



Surgical budgets and schedules are tighter than ever. The STERIS® 4085 meets your needs with a versatile, high-productivity general surgical table specifically designed to provide outstanding value. Now you can get a table that offers excellent imaging and patient posturing capabilities all in one.

Outstanding versatility boosts productivity.

The 4085 is exceptionally intuitive, saving valuable minutes in the OR. A four-section table top contours to all patient postures, the powered slide improves C-arm access, and the leg section can be quickly removed for unrestricted perineal access. A powered, radiolucent kidney elevator enhances lateral procedures.

Its generous weight limits allow for use with virtually all patients, doing away with the need for multiple specialty tables. Its light weight makes it easy to move, while its impact-resistant, cascading shrouds enable fast, easy cleaning. To maximize your investment, the table is compatible with a broad array of previously purchased accessories.

The STERIS® 4085 quickly accommodates the widest array of surgical procedures in today's OR.

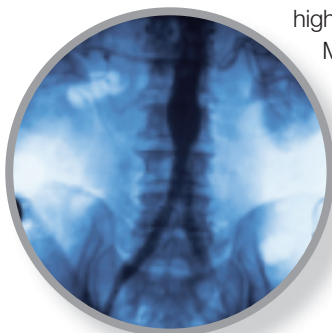


Superb C-arm access provides excellent imaging.



The 4085's narrow column, radiolucent table top and superb slide provide one of the largest imaging footprints on the market today. That means outstanding access for the C-arm and surgical team...without time-consuming patient reorientation.

The generous imaging area permits clear, high quality images crucial to today's MIS, cardiothoracic, orthopedic and neurosurgical procedures.



Intelligent controls make it easy to use.

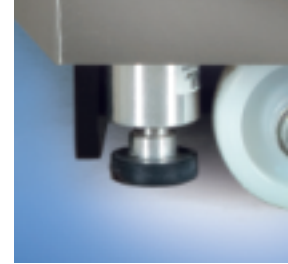
Seconds are crucial when you have a critical patient on the table. The 4085's intuitive hand control instantly telegraphs table positioning data to caregivers with an easy-to-read digital display... without lifting the sterile drape. A return-to-level button quickly and safely returns the patient to level mode. And its Auto Limit Sensor™ (ALS) allows you to operate the table without having to worry about unintended sectional collisions.

Designed around today's patients.

The four-section table top was designed using human factor analysis to anticipate ergonomic articulations of the anatomy to improve patient outcomes. Smooth functioning hydraulic systems are designed to provide safer ergonomically structured movement for surgeon access to the operative site. The table's height and weight ranges accommodate virtually all patients.



STERIS® 4085 General Surgical Table



Self-Leveling Floor Locks
Unique self-compensating hydraulic system

ADVANCING CARE THROUGH PRACTICAL INNOVATION



Easy-to-Use Hand Control

Ergonomically designed, lightweight hand control features easy-to-read icons. The “flex,” “reflex” and “level” functions help ensure quick and safe patient positioning. The dual step “floor lock” and “unlock” function enhances patient safety by preventing the table from being inadvertently unlocked during a case.

Auto Limit Sensor™

An indicator informs and prevents sectional conflict, displaying alternative table movements on the LCD readout. As you lower the foot section, for example, the Auto Limit Sensor™ control stops the section before it collides with the table base, alerts you to the problem and suggests an alternative articulation, protecting your investment in the table.

Hand Control Display

The display provides the user with an accurate and continuous table status. The LCD readout communicates valuable ALS information, floor lock status and kidney bridge elevation, thus eliminating the need to lift the sterile drape.

Smooth finite headrest adjustment to provide the right access at the right time

Electro-hydraulic 4-section table top with powered radiolucent kidney elevator for smooth patient posturing

Power panel with dual power modes (batteries or live current) allow for both convenience and continual power





Excellent Access

Compact base maximizes foot room for easy access

Removable Leg Section

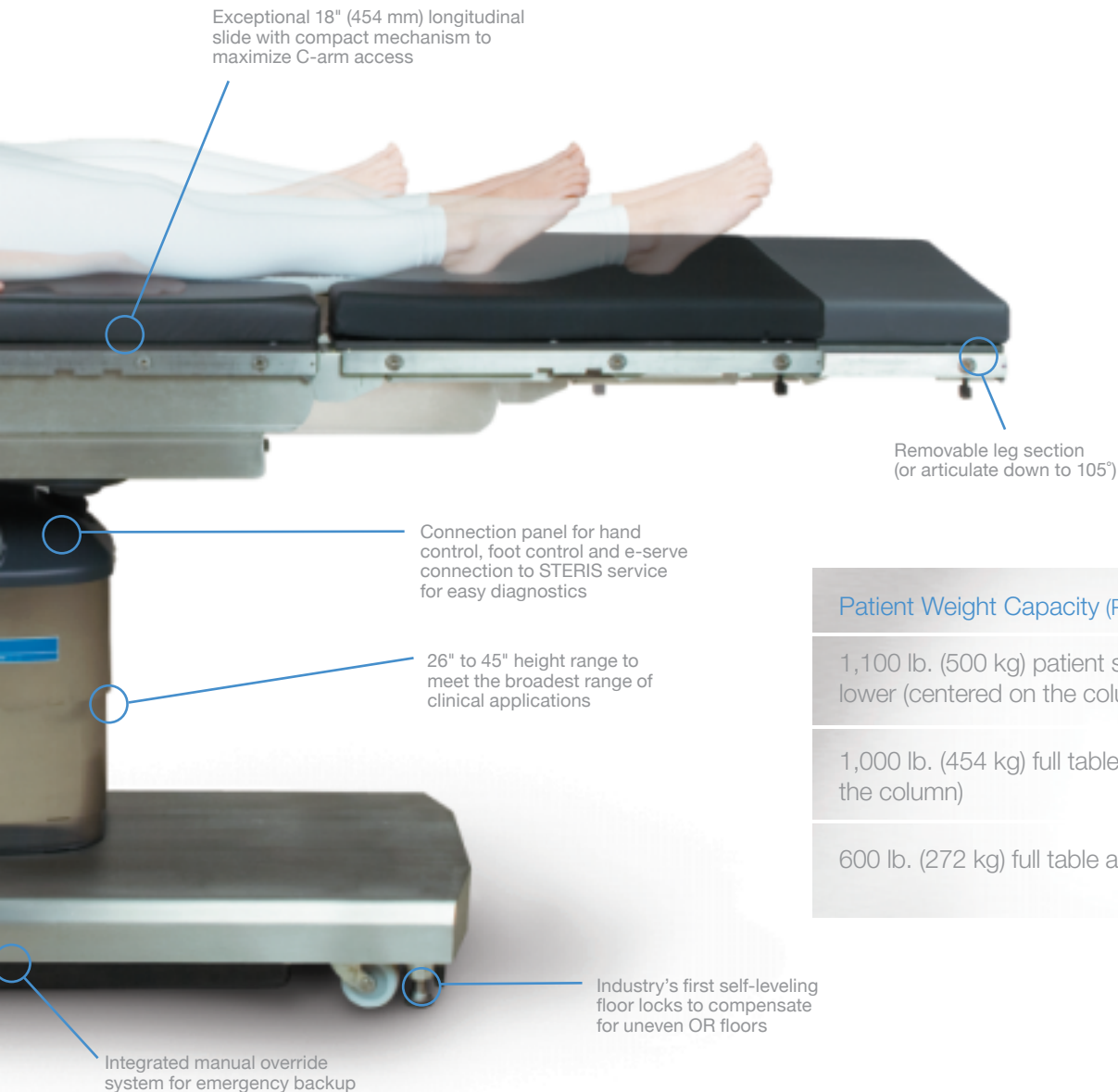
Provides unobstructed access to the perineal area (with no protruding pins)

Integrated Manual Override System

Easy access to override hand control and foot pedal to provide articulation even when power is out

Easy-To-Read Indicators

Continuous battery level status



Patient Weight Capacity (Patient in Normal Orientation)

1,100 lb. (500 kg) patient support, including raise/lower (centered on the column)

1,000 lb. (454 kg) full table articulation (centered on the column)

600 lb. (272 kg) full table articulation, including slide

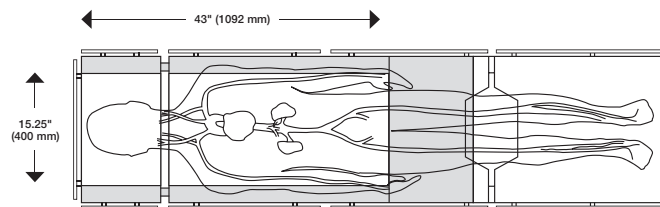


Large Imaging Area

Centered IA Coverage (not shown)

Imaging length:
 34" (864 mm) to head
 34" (864 mm) to foot

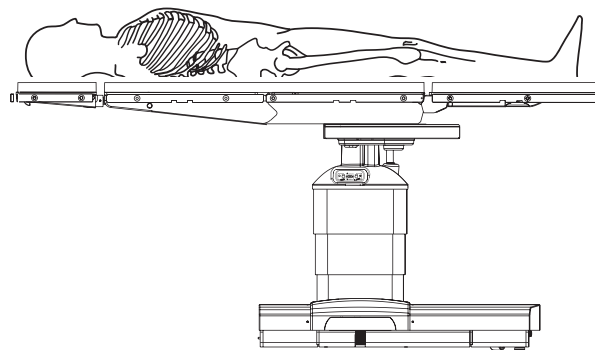
Total imaging area:
 518 sq. in. (3456 sq. cm.) to head
 514 sq. in. (3320 sq. cm.) to foot



Upper Body IA Coverage

Table slid to head
 Imaging length: 43" (1092 mm)
 Total imaging area: 655.75 sq. in. (4368 sq. cm.)

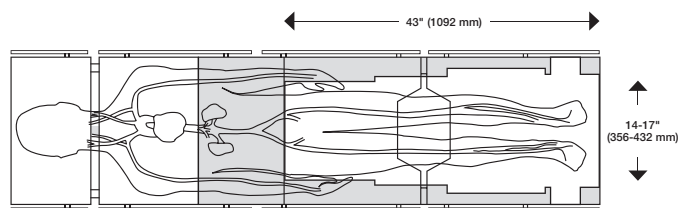
- Pacemaker insertions
- Hickman catheters
- Broviac insertions
- Shunts
- IVC filters
- Cholangiography
- Lung biopsies
- Thoracic and kidney
- Gall bladder
- Total hip revision
- Ophthalmic
- Neurosurgery
- Spinal
- Implantable defibrillation
- Endoscopy



Lithotomy IA Coverage (not shown)

Imaging length: 19" (483 mm)
 Total imaging area: 266 sq. in. (1719 sq. cm.)
 (without the use of the 4085 UroEndo
 Extension, which adds additional IA)

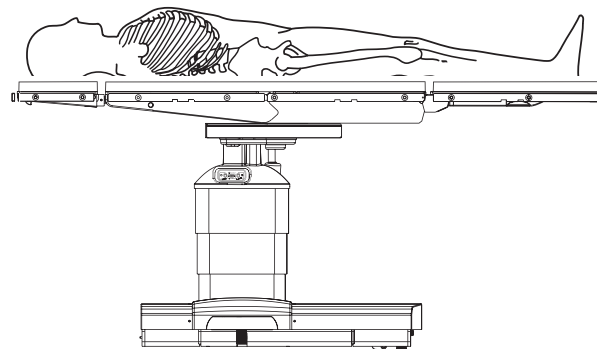
- Cystoscopy
- Endourology
- Gynecology and abdominal
- Nissen fundoplication



Lower Body IA Coverage

Table slid to foot
 Imaging length: 43" (1092 mm)
 Total imaging area: 682.5 sq. in. (4403 sq. cm.)
 Image length with head section
 reversed (not shown): 55" (1397 mm)
 Total imaging area with head section
 reversed (not shown): 865.5 sq. in. (5584 sq. cm.)

- Lower body arterial imaging
- Lower limb, non-traction orthopedics
- Femoral/popliteal bypass
- Laser angioplasty



Innovative Hand Control

An intuitive hand control puts patient posturing at your fingertips. With an ergonomic design and easy-to-read LCD readout display, it communicates instantaneous table positioning data...without lifting the sterile drape.

- LCD provides information on potential table section interference through the Auto Limit Sensor™ function, overall table status and service diagnostics

- Return-to-level button quickly and safely returns the patient to a level position, maintaining homeostasis
- Dedicated buttons offer instant access to smooth sectional articulation, floor lock activation and patient positioning (Trendelenburg, height, tilt, level and stop)
- Backlit screen for clear viewing in darkened rooms

Technical Specifications

	STERIS® 4085
Table Length	81" (2057 mm)
Table Width	20" (508 mm)
Table Height Range	26 to 45" (660-1143 mm)
Tabletop Slide Range	9" (227 mm) to head, 9" to foot
Patient Weight Capacity*	1,100 lb. (500 kg) patient support, including raise/lower (centered on the column) 1,000 lb. (454 kg) full table articulation (centered on the column) 600 lb. (272 kg) full table articulation, including slide
Table Shipping Weight	560 lb. (254 kg)
Trendelenburg/Reverse	30° / 30°
Lateral Tilt (left/right)	20° / 20°
Head Section	+90° / -90°
Back Section	+80° / -40°
Leg Section	0° / -105° (removable)
Flex/Reflex	140° / 100°
Manual Override	Yes
Perineal Cut-out	Yes
Kidney Elevator	4" powered radiolucent

*Patient in Normal Orientation.



THE SOLUTION FOR EVERY OPERATING ROOM AND BUDGET



Amsco® 3085 SP

STERIS® 4085

STERIS® 5085

STERIS® 5085 SRT

General Surgical Table Line

From versatile ambulatory surgery centers to state-of-the-art robotic suites, STERIS offers a table for every modern OR need. Each delivers exceptional safety, quality and productivity, assuring the very best return on your table investment.

Visit www.steris.com to see a video of the 5085 SRT table in motion and hear what it can do for your facility.



STERIS Corporation, 5960 Heisley Road, Mentor, OH 44060-1834, USA • 440-354-2600 • 800-548-4873

M3309EN.2009-04, Rev. A, 5000 printed 08/2012 ©2009-2010 STERIS Corporation. All rights reserved.